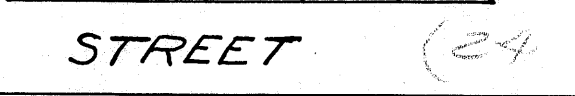
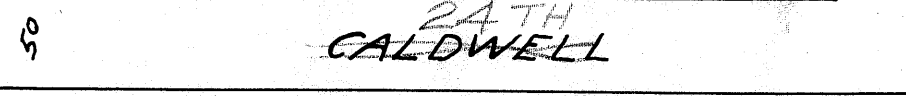
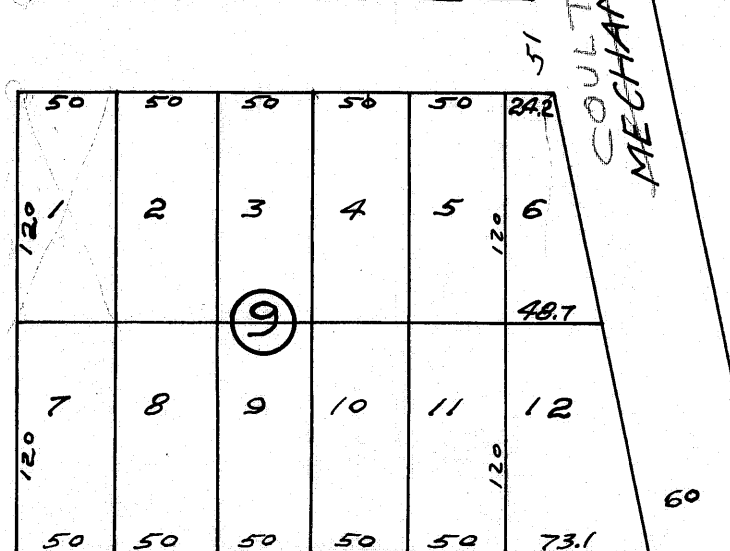
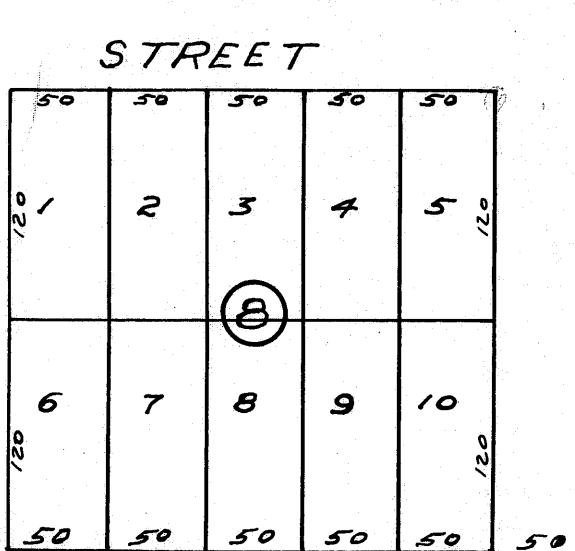
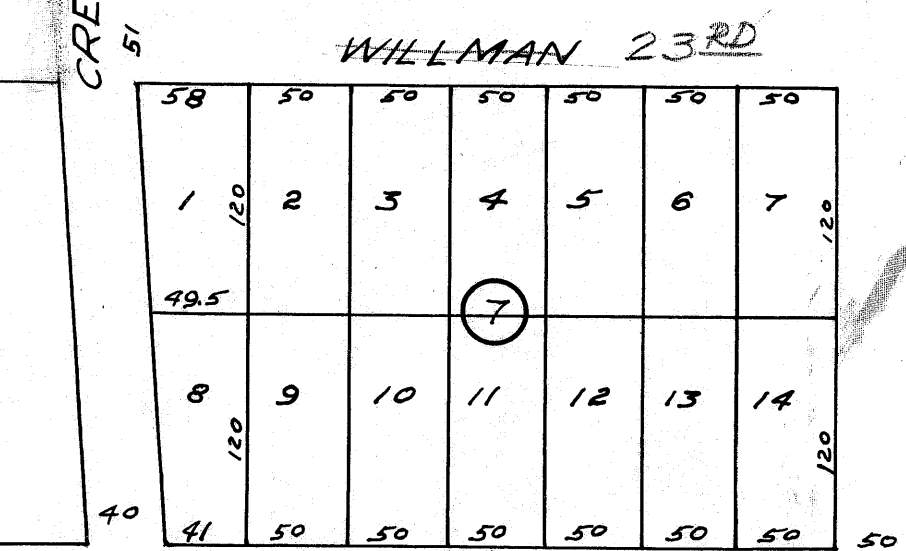
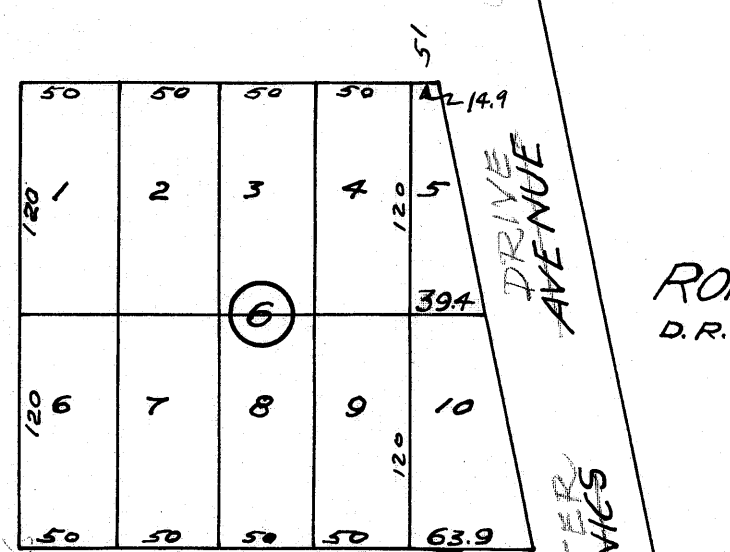
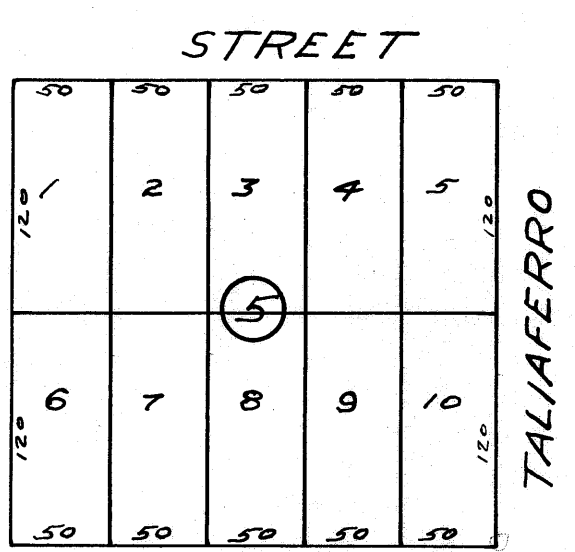
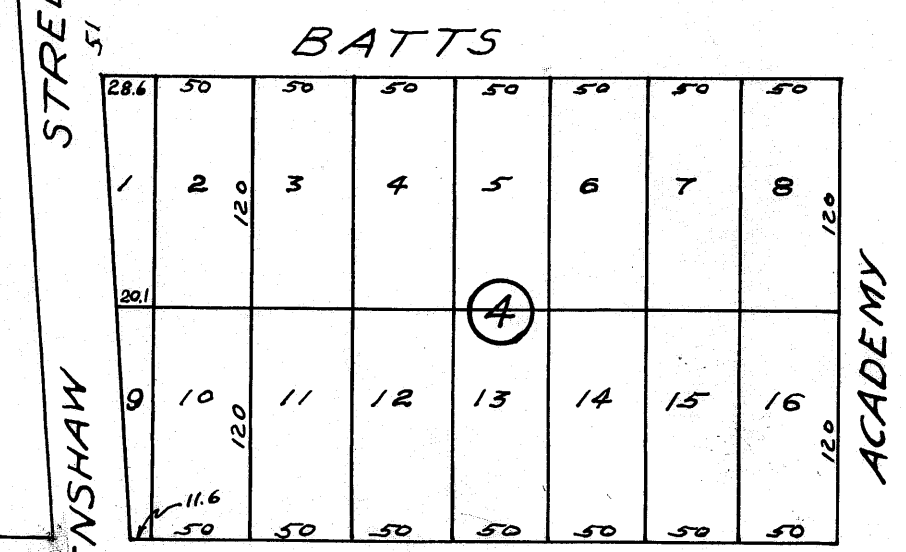
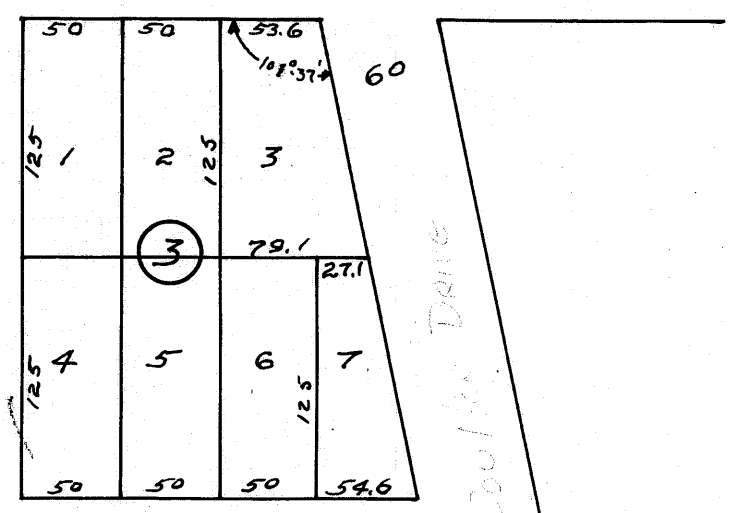
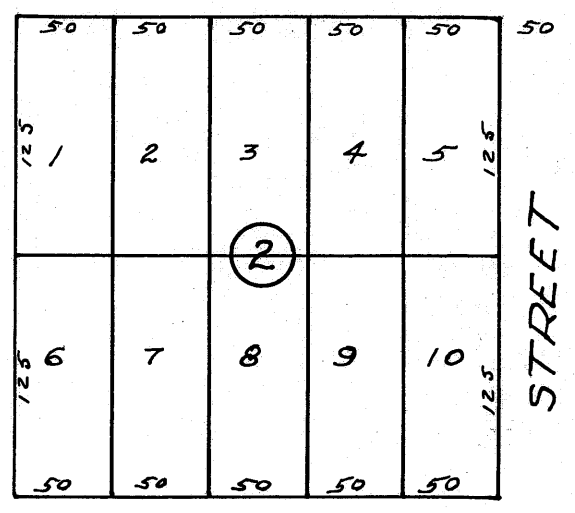
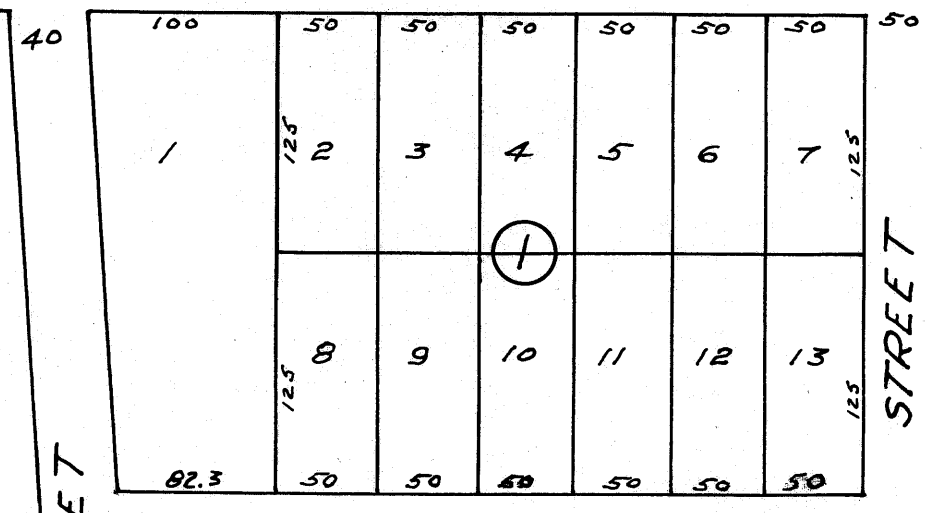


on land on 9/16/10

W. T. JAMES RE-SUBDIVISION

URSULINE

AVENUE



24TH CALDWELL

STREET (24TH)

HASWELL PARK

BATTS ADDITION

D.R. 38 PG. 560 3-13-'19
SCALE 1"=100'

NOTE:
RED DATA NOT ON ORIGINAL



ROHDE ADDITION
D.R. 36 Pg. 5 3-21-'10

COULTER DRIVE
COULTER AVENUE
COULTER MECHANICS